



The **Southern Cross Alpine Lodge floor plan** is per page 2 of this document EXCEPT that page has not been updated for some small changes. Thus the following room list overrides the page 2 details. As at 15 February 2023, our 10 bedrooms contain the following beds :

Cortina	1 @ 3x and 1 @ 2x
Perisher	1 @ db and 1 @ 2x
Smiggins	1 @ db and 1 @ 1x
Aviemore	1 @ 2x
Ramsau	1 @ qn
Chamonix	1 @ 3x
Guthega	1 @ db and 1 @ 2x and 1 @ 1x
Sarajevo	1 @ 3x and 1 @ 2x and 1 @ 1x
Vail	1 @ db and 1 @ 2x
Banff	1 @ qn and 1 @ trundle (usually stored under the queen bed)

Although (when counting double and queen as 2) the above adds to more than 25, under Southern Cross's lease with NPWS we are limited to a maximum of 25 persons including staff. There is some limited flexibility for guests under age 5 years old.

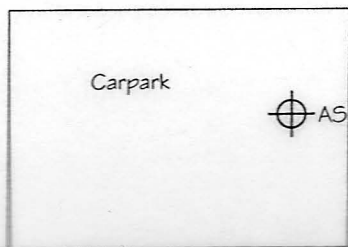
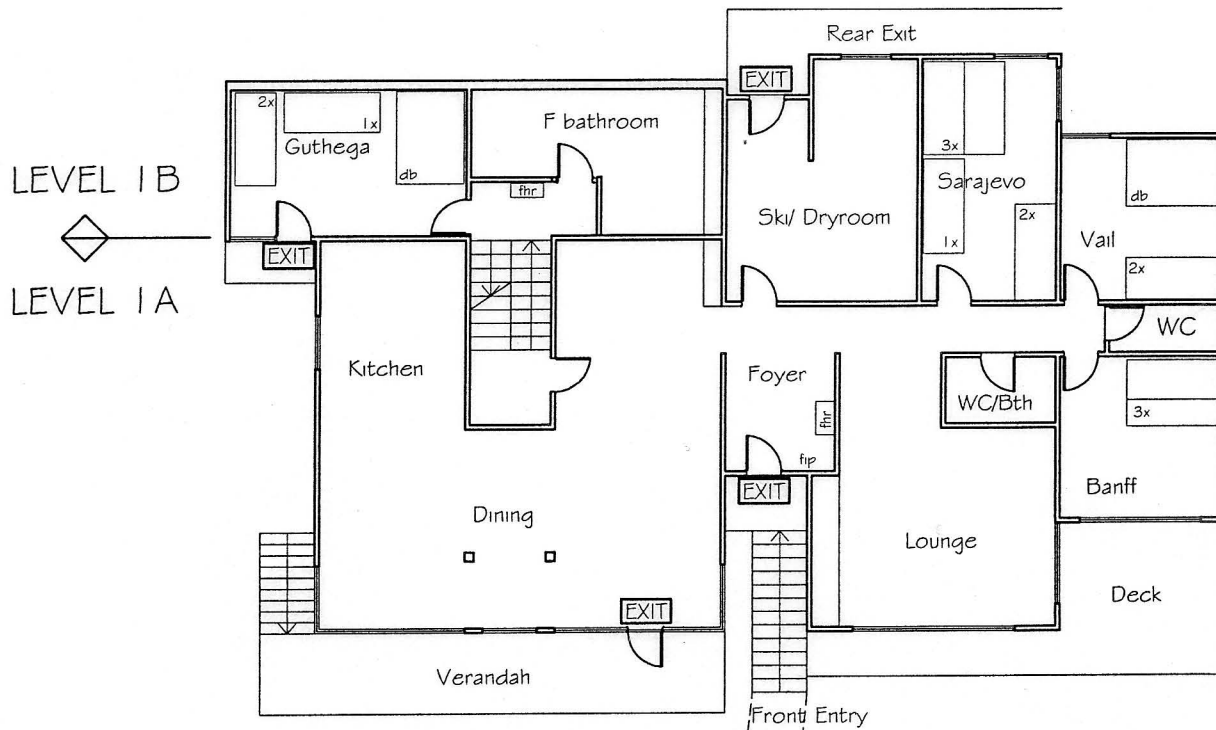
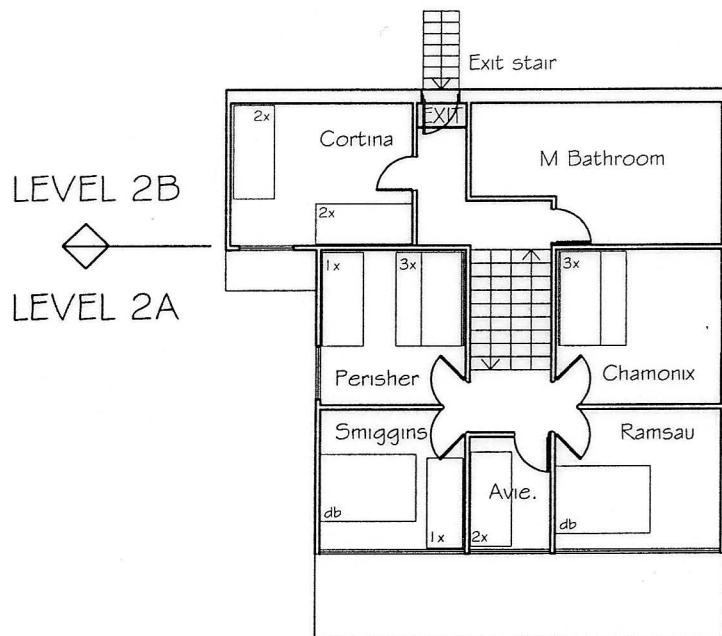
Legend

1x	Free standing single bed
2x	Twin single bunk beds
db	Double Bed
qn	Queen Bed
3x	Trio Bed (Double with single bunk bed above the double)
trundle	Trundle bed

Per www.southerncrossalpinelodge.com.au/guest-information, Southern Cross provides pillows, doonas with covers, and blankets. Guests need to bring their own sheets & pillow slips (their own pillows if they prefer), towel and toiletries, both outside & enclosed indoor shoes, sun and lip cream, wet weather gear (including extra gloves), sunglasses and / or goggles, and we also suggest a small backpack.

For guests allocated to double beds, we recommend queen bed sheets, since most of our double beds have deep sided mattresses that standard double sheets don't fit.

If you have any questions, please check with your lodge hosts or email scbookings@youthworks.net.



SOUTHERN CROSS
SKI CHALET
SMIGGIN HOLES
NTS